

 **TUBESCA-COMABI**

PRESENTS

# KOLOS

THE EXTRA COMFORTABLE STEPLADDER



**STEPS**  
**110 mm**



# KOLOS

## THE MOST COMFORTABLE STEPLADDER ON THE MARKET

With its 110 mm wide steps, cast aluminium hinges and reinforced uprights, KOLOS really stands out for its toughness and comfort.

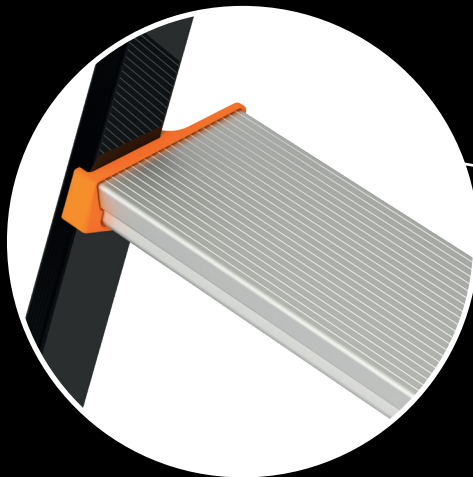


# SIMPLY **KOLOSSAL**

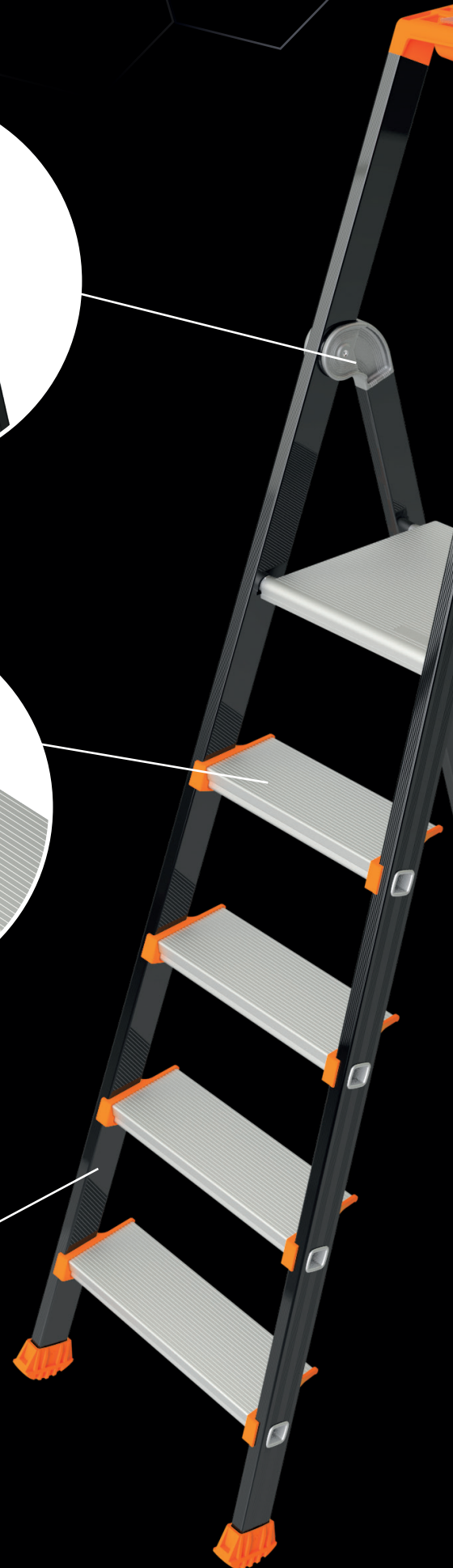
**One-piece HINGES** in  
ribbed, ultra-resistant cast  
aluminium

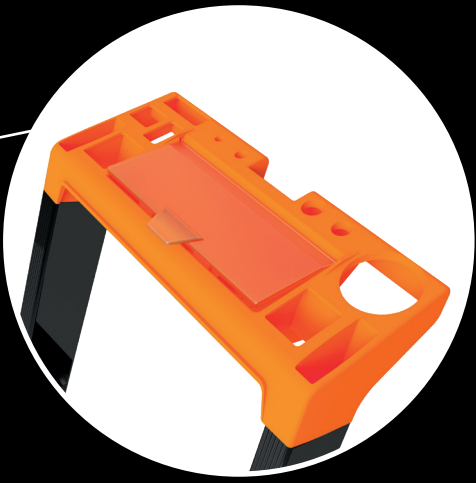
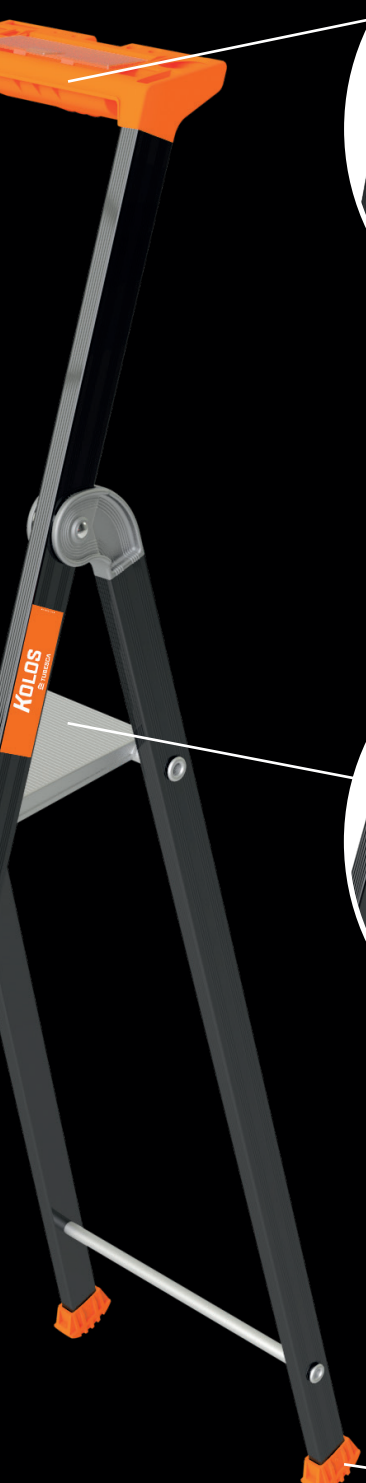


**Crimped, non-slip STEPS** in  
extruded aluminium, 110 mm  
wide



**Epoxy-painted UPRIGHTS** with  
high-resistance  
step fittings

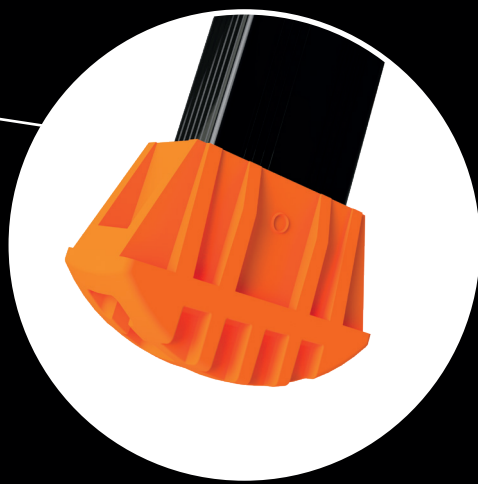




**TOOL-HOLDER**  
with integrated  
closing



**PLATFORM**  
280 x 250 mm



**FOOTPADS**  
full-covering,  
non-slip pads with  
wear indicator

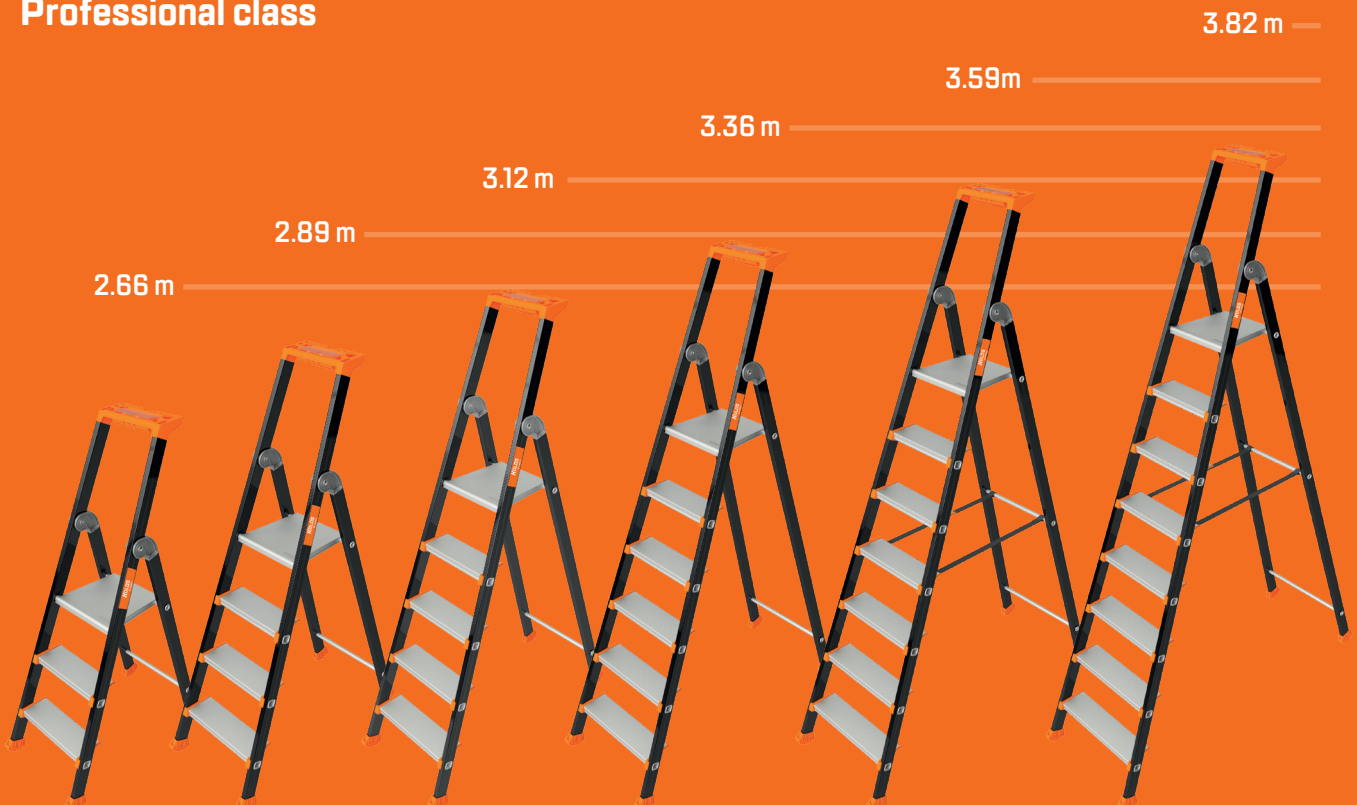
13.4 cm



- ✓ Standard EN 131
- ✓ Decree 96 333
- ✓ Professional class



## MAXIMUM ACCESS HEIGHT



Reference	Height (m) folded	Height of platform (m)	Number of steps	Weight (kg)	Width at base (m)	Opening at base (m)	Access height (m)		Packing dimensions
02375813	1.44	0.66	3	4.8	0.43	0.75	<b>2.66</b>	3178740203016	1.44x0.43x0.14
02375814	1.69	0.89	4	5.8	0.46	0.91	<b>2.89</b>	3178740203023	1.69x0.46x0.14
02375815	1.94	1.12	5	6.8	0.48	1.06	<b>3.12</b>	3178740203030	1.94x0.48x0.14
02375816	2.19	1.36	6	7.8	0.51	1.22	<b>3.36</b>	3178740203047	2.19x0.51x0.14
02375817*	2.44	1.59	7	9.0	0.54	1.37	<b>3.59</b>	3178740203054	2.44x0.54x0.14
02375818*	2.68	1.82	8	10.1	0.56	1.52	<b>3.82</b>	3178740203061	2.68x0.56x0.14

\* Models equipped with safety straps.



**FINISHING WORK  
IN BUILDINGS**



**CONSTRUCTION  
STRUCTURAL WORK**



**MAINTENANCE  
SERVICING**



**FINISHING  
PAINTWORK**



**MADE IN FRANCE AT OUR  
AILLY-SUR-NOYE (80)  
PRODUCTION UNIT**

**5-YEAR  
WARRANTY**



# YOUR SALES TOOLS



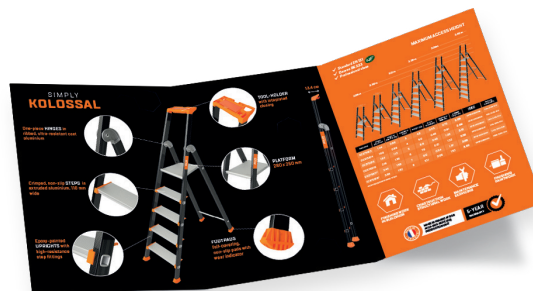
“Product on-site” page  
[www.tubesca-comabi.com](http://www.tubesca-comabi.com)



Newsletter



Poster 40 x 60 cm



A4 six-page brochure



Product datasheet

Find more details on:  
[www.tubesca-comabi.com](http://www.tubesca-comabi.com)  
 or ask for advice from your approved distributor

## CONTACTS:

Phone: +33 (0)4 74 00 90 90 - E-mail: [sales@tubesca-comabi.com](mailto:sales@tubesca-comabi.com)

